

FLEXIBLE OFFICE FURNITURE



vari®

WORKSTATION NECESSITIES



STANDING DESKS

Work Elevated®

Vari Electric Standing Desks make it easy to go from sitting to standing throughout the day, creating a happier, healthier, and more productive workspace. They are built to last and are backed by a Lifetime Warranty.



Electric Standing Desk with ComfortEdge™ 48x30

The rounded, waterfall edge allows enhanced posture, a comfortable place to rest your forearms with less wrist stress, and a wider range of reach.

- Reclaimed Wood: #402273
- Butcher Block: #402373
- Light Wood: #402258
- Walnut: #402259
- Black: #402274
- White: #402275



Electric Standing Desk with ComfortEdge™ 60x30

The rounded, waterfall edge allows enhanced posture, a comfortable place to rest your forearms with less wrist stress, and a wider range of reach.

- Reclaimed Wood: #402276
- Butcher Block: #402374
- Light Wood: #402260
- Walnut: #402261
- Black: #402277
- White: #402278



Electric Standing Desk with ComfortEdge™ 72x30

The rounded, waterfall edge allows enhanced posture, a comfortable place to rest your forearms with less wrist stress, and a wider range of reach.

- Reclaimed Wood: #402279
- Butcher Block: #402375
- Light Wood: #402262
- Walnut: #402263
- Black: #402280
- White: #402281



L-Shape Electric Standing Desk

Features the ergonomic ComfortEdge™ design and maximum desk space that can be set up on the left or right.

- Reclaimed Wood: #402452
- Black: #402453
- Light Wood: #402451
- Walnut: #402450



Ergo Electric Standing Desk 54x26

The rounded, waterfall edge allows enhanced posture, a comfortable place to rest your forearms with less wrist stress, and a wider range of reach.

- Reclaimed Wood: #402389
- Butcher Block: #402388
- Light Wood: #402118
- Espresso Wood: #402119
- **Darkwood: #402107**



Electric Standing Desk 60x30

Features an undercut, chamfered edge for a sleek appearance and uses the same one-piece steel frame and 3-stage legs for industry-leading height range and stability.

- Reclaimed Wood: #400803
- **Butcher Block: #400814**
- Walnut: #402533



Electric Standing Desk 48x30

Features an undercut, chamfered edge for a sleek appearance and uses the same one-piece steel frame and 3-stage legs for industry-leading height range and stability.

- Reclaimed Wood: #400818



Electric Standing Desk 60x24

Features an undercut, chamfered edge for a sleek appearance and uses the same one-piece steel frame and 3-stage legs for industry-leading height range and stability.

- White: #401442



Electric Standing Desk 72x30

Features an undercut, chamfered edge for a sleek appearance and uses the same one-piece steel frame and 3-stage legs for industry-leading height range and stability.

- Reclaimed Wood: #401137
- Butcher Block: #401138
- Walnut: #402535



Coasters

Keep your desk tidy and protect your desk surface with Vari drink coasters.

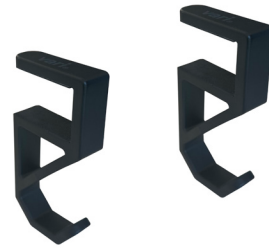
- Set of 4
- Blue: #402115



Electric Standing Desk Casters

Smooth rolling over carpet, tile, and wood flooring to easily reposition your desk.

- Set of 4
- Black: 402115



Desk Hooks

Slide easily onto desk or table to keep headphones, bags, and other items close-by.

- Set of 2
- Black: #401161



Contact your account representative
or call (800) 207-2587 for free, fast delivery.*

*Free delivery in the contiguous US.
Pricing and availability subject to change.
Patent and trademark information: vari.com/patents.
©2022-2024 Varidesk, LLC All rights reserved. v 06.24

WORK TABLES

Flexible Tables

Multi-function tables can provide spaces to work or collaborate and are a flexible way to configure your office.



Table 60x30

The sleek, modern design complements workstations as a side table or can be used as a fixed-height desk.

- **Light Wood: #402235**
- Walnut: #402236
- Reclaimed Wood: #402237
- Black: #402238
- White: #402239



Table 60x24

The sleek, modern design complements workstations as a side table or can be used as a fixed-height desk.

- Light Wood: #402230
- Walnut: #402231
- **Reclaimed Wood: #402232**
- Black: #402233
- White: #402234



Table 48x24

The sleek, modern design complements workstations as a side table or can be used as a fixed-height desk.

- Light Wood: #402225
- **Walnut: #402226**
- Reclaimed Wood: #402227
- White: #402229



Standing Work Table

This modern standing-height table can be a workstation or meeting table with bar-height seating or drafting chair.

- Light Wood: #402240
- Walnut: #402241
- Reclaimed Wood: #402242
- Black: #402243
- **White: #402244**



Table 48x24

Featuring an indent for cable passthrough, this table can stand alone as a workstation, pair with a desk as a return, or be linked with other tables for seamless benching.

With Cable Management Tray

- Butcher Block: #45756
- Reclaimed Wood: #46000
- White: #45622

Without Cable Management Tray

- **Butcher Block: #401975**
- Reclaimed Wood: #401976 (GSA)
- White: #401977



Table 60x24

Featuring an indent for cable passthrough, this table can stand alone as a workstation, pair with a desk as a return, or be linked with other tables for seamless benching.

With Cable Management Tray

- Black: #41887 (GSA)
- Butcher Block: #46077
- Reclaimed Wood: #46100
- White: #46010

Without Cable Management Tray

- Black: # 401979 (GSA)
- Butcher Block: #401980
- Reclaimed Wood: #401982
- **White: #41888 (GSA)**



Table 60x30

Featuring an indent for cable passthrough, this table can stand alone as a workstation, pair with a desk as a return, or be linked with other tables for seamless benching.

With Cable Management Tray

- **Black: #401617**
- Butcher Block: #46110
- White: #401329

OFFICE SEATING

Have A Seat

Attractive and adjustable office seating that will keep you active, comfortable, and productive all day.



Task Chair

Pivoting ergonomic backrest for maximum lumbar support with 4 adjustable settings. Available with and without headrest.

- Black (with Headrest): #401494
- Black (without Headrest): #401493

Endorsed By  WORLD FEDERATION OF
CHIROPRACTIC



Performance Task Chair

Fully height-adjustable seat with cooling gel and memory foam cushion.

- Black: #43285



Drafting Chair

Adjustable seat height, armrests, and footrest ring.

- Black: #401495



Active Seat

Height adjustable, fully articulating pedestal to keep your lower body engaged.

- Black: #400767



Upholstered Desk Chair

Upholstered seating with adjustable seat height and lumbar support.

- Sterling Grey: #401530
- Azure Blue: #401531



Executive Task Chair

Black upholstery and a polished aluminum base makes this office chair perfect for any executive office design.

- Black (Faux Leather Vinyl): #401551

EXECUTIVE FUNCTION



EXECUTIVE OFFICE COLLECTION

The Suite Life

A sophisticated storage and furniture solution, this collection can easily be mixed and matched to create an incredible number of custom configurations.



Executive Lateral File Cabinet

Fully assembled wide file cabinet with 2 lockable drawers. Compatible with the full Executive Collection.

- White: #401625
- Walnut: #401654

Executive Storage Cabinet

Fully assembled cabinet with adjustable interior shelf. Compatible with the full Executive Collection.

- White: #401633
- Walnut: #401655



Executive File Cabinet

Fully assembled file cabinet with 2 lockable drawers. Compatible with the full Executive Collection.

- White: #401632
- Walnut: #401653

Executive Bookshelf

Fully assembled bookshelf with adjustable shelf. Compatible with the full Executive Collection.

- White: #401634
- Walnut: #401656



Executive Wardrobe Cabinet

Includes a hanging rod and adjustable interior shelf. Compatible with the full Executive Collection.

- White: #401635
- Walnut: #401651



Executive Overhead Cabinet

Fully assembled cabinet with 2 sliding doors. Compatible with the full Executive Collection.

- White: #401636
- Walnut: #401652



Executive Shelf Tower

Designed to blend seamlessly with the full Executive Collection, this open storage solution allows you to showcase art, photographs, books, or awards.

- White: #402134
- Walnut: #402133
- White (with Top Panel): #402291
- Walnut (with Top Panel): #402290



Executive Office Joining Bracket Set

Metal brackets quickly and easily join pieces together for a precise fit.

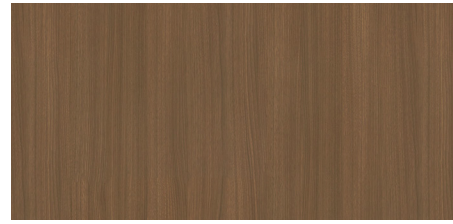
- Set of 2
- Slate: #401767



Executive ESD Base

Encloses the legs and feet of the 60" and 72" Vari Electric Standing Desks.

- White: #401766
- Walnut: #401765



Executive ESD Lower Modesty Panel

Connects the Executive Electric Standing Desk Bases. 21¼" tall.

- 60" White: #401778
- 60" Walnut: #401777
- 72" White: #401780
- 72" Walnut: #401779



Executive ESD Modesty Panel

Hangs from underside of desk to provide privacy at any height. 23" tall.

- 60" White: #401663
- 60" Walnut: #401664
- 72" White: #401641
- 72" Walnut: #401646



Contact your account representative
or call (800) 207-2587 for free, fast delivery.*

*Free delivery in the contiguous US.
Pricing and availability subject to change.
Patent and trademark information: vari.com/patents.
©2022-2024 Varidesk, LLC All rights reserved. v 06.24

WORKING TOGETHER

Tables, chairs, and soft seating play an important role in bringing your team together, wherever they gather.



TABLES

Eating & Meeting

Functional and stylish tables for a wide variety of spaces. Office tables that provide places to meet, talk, or work while maintaining a modern office design.



Flip Top Training Table 5'

Just as easy to flip up and store nested together as they are to assemble, our rolling Flip Top Training Table is an excellent choice for training rooms and multi-purpose spaces.

- Table (Black): #401177
- Table (White): #401252
- Panel: #401369



Flip Top Training Table 6'

Just as easy to flip up and store nested together as they are to assemble, our rolling Flip Top Training Table is an excellent choice for training rooms and multi-purpose spaces.

- Table (Black): #401375
- Table (White): #401376
- Panel: #401370



Conference Table

With roll-and-lock casters and built-in cable management, this table is a productive place to meet.

- Reclaimed Wood: #43190
- Light Wood: #402176
- White: #401051
- Black: #401610



Standing Conference Table

This standing-height table features commercial-grade materials and roll-and-lock casters for mobility and stability.

- Reclaimed Wood: #43762
- Butcher Block: #43653
- Black: #401611



Round Table

Perfect for casual meeting spaces or lobby areas, this round top table has a spacious work area and room for 4.

- Reclaimed Wood: #401816
- **Butcher Block: #401815**
- White: #401813
- Light Wood: #402362
- Walnut: #402361



Standing Round Table

More than just a standing-height table, this multipurpose table can be where you meet or where you eat.

- **Reclaimed Wood: #46227**
- Butcher Block: #46218
- White: #401814
- Light Wood: #402359
- Walnut: #402360



Square Table

At 41" across, this multi-purpose table has a spacious work area and room for four, perfect for casual meeting spaces or lobby areas.

- **Reclaimed Wood: #401972**
- Butcher Block: #401973
- White: #401974



Standing Square Table

At 41" across, this multi-purpose table has a spacious work area and room for four, perfect for casual meeting spaces or lobby areas.

- Reclaimed Wood: #401969
- Butcher Block: #401970
- **White: #401971**



Disc Base Table 36"

Versatile and stylish, the Disc Base Table 36" is designed to complete an office's meeting, executive, cafe, or collaboration area.

- Walnut (top)/Black (legs): #402041
- White (top)/Slate (legs): #402042



Disc Base Table 42"

Stylish form and function combine in our larger 42"-diameter Disc Base Table.

- Walnut (top)/Black (legs): #402043
- White (top)/Slate (legs): #402044



Standing Disc Base Table 36"

Elevate casual meeting spaces with this standing-height meeting table.

- Walnut (top)/Black (legs): #402045
- White (top)/Slate (legs): #402046



Standing Disc Base Table 42"

Elevate casual meeting spaces with this 42"-diameter standing-height meeting table.

- Walnut (top)/Black (legs): #402047
- White (top)/Slate (legs): #402048



Executive Conference Table 4'x8'

As a modern and functional place for 6-8 to sit and collaborate, this table features a central integrated power insert and cable management openings in the center leg, letting you can charge all your devices and keep your meeting productive.

- Walnut (top)/Black (legs): #402036
- White (top)/Slate (legs): #402038



Executive Conference Table 4'x10'

As a modern and functional place for 8-10 to sit and collaborate, this table features two integrated power inserts and cable management openings in both center legs, letting you can charge all your devices and keep your meeting productive.

- Walnut (top)/Black (legs): #402024
- White (top)/Slate (legs): #402039



Executive Conference Table 4'x12'

As a modern and functional place for 10-12 to sit and collaborate, this table features two integrated power inserts and cable management openings in both center legs, letting you can charge all your devices and keep your meeting productive.

- Walnut (top)/Black (legs): #402037
- White (top)/Slate (legs): #402040

GROUP SEATING

Better Together

Conference rooms, cafes, and training spaces need group seating that's comfortable and easy to store when necessary.



Tall Side Chair

Comfortable curved tall seating in an attractive faux leather vinyl finish.

Set of 2

- Sand Grey: #401387
- Shadow Grey: #401383
- Toffee: #401801



Side Chair

Comfortable curved seating in an attractive faux leather vinyl finish.

Set of 2

- Sand Grey: #401037
- Shadow Grey: #401382
- Toffee: #401794



Tall Wave Side Chair

Versatile tall chair with modern, minimalist design.

Set of 2

- Black: #402113



Wave Side Chair

Versatile lounge seat with modern, minimalist design.

Set of 2

- Black: #402114



High Back Conference Chair

Premium seating with 360-degree swivel and pneumatic height adjustment.

- Charcoal Grey (Faux Leather Vinyl): #43446



Upholstered Conference Chair

Two-tone seating with 360-degree swivel and pneumatic height adjustment.

- Graphite Grey (Faux Leather Vinyl)/Sterling Grey (Polyester): #401561



Nesting Chair

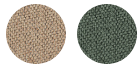
Comfortable chairs with seats that flip up for space-saving nesting when not in use.

- Set of 2
- Black: #401104

SOFT SEATING

Sit & Relax

From breakrooms to boardrooms and beyond, our comfortable, commercial-grade seating and tables will bring more function to your office.



Contemporary Three-Seat Sofa

Perfect for executive or lounge areas, this foam- and fiber-filled sofa is a comfortable and stylish addition to your space.

- Sandstone (Polyester): #401042
- Moss Green (Polyester): #402017



Arm Chair

This chair makes it easy to create a discussion area for one-on-ones or small group meetings and is foam and fiber-filled for extra comfort.

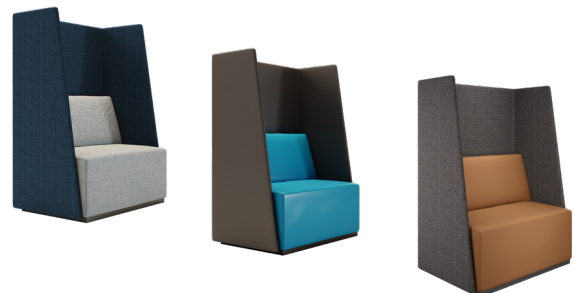
- Navy (Polyester): #400592
- Deep Grey (Polyester): #400713
- Sand Grey (Faux Leather Vinyl): 401396
- Shadow Grey (Faux Leather Vinyl): #401015



High Back Sofa

Providing both comfort and privacy in one eye-catching signature piece, this sofa is great for focused work or quiet conversations.

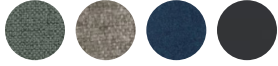
- Light Grey/Navy (Polyester) : #400593



High Back Chair

This comfortable seating option offers individuals a private retreat for focused work or a quiet break.

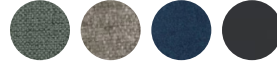
- Navy/Light Grey (Polyester): #401049
- Deep Grey/Light Blue (Faux Leather Vinyl): #401048
- Onyx (Polyester)/Toffee (Faux Leather Vinyl): #401795



Corner Seat

Make any casual area a multipurpose space with the modular Corner Seat that can be arranged in a variety of ways.

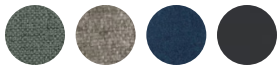
- Aqua Green (Polyester): #401043
- Light Grey (Polyester): #400582
- Navy (Polyester): #400615
- Shadow Grey (Faux Leather Vinyl): #401791



Armless Seat

This modern seat can pair with our other sectional pieces to create comfortable seating areas or be used independently.

- Aqua Green (Polyester): #401044
- Light Grey (Polyester): #400580
- Navy (Polyester): #400613
- Shadow Grey (Faux Leather Vinyl): #401791



Sectional Ottoman

This piece can be used as a traditional ottoman and doubles as a seat that coordinates with the collection.

- Aqua Green (Polyester): #401045
- Light Grey (Polyester): #400583
- Navy (Polyester): #400617
- Shadow Grey (Faux Leather Vinyl): #402012



Sectional Table

The Sectional Table features a black metal frame and durable laminate surface for a side table.

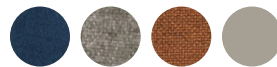
- Black: #400581



Lounge Chair

A professional looking chair that will fit seamlessly into any space, whether it's for waiting, working, or meeting.

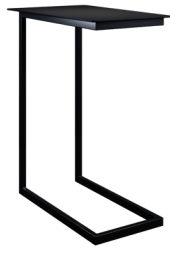
- Moss Green (Polyester): #402025



Small Ottoman

The Small Ottoman is perfect for a quick check-in or a casual brainstorming session.

- Navy (Polyester): #400587
- Light Grey (Polyester): #400588
- Burnt Orange (Polyester): #402332
- Sand Grey (Faux Leather Vinyl): #401030



Laptop Side Table

With a C-shape and sturdy metal frame, this table is a perfect place to set a laptop or beverage while sitting.

• Black: #401744



Contemporary Coffee Table

Constructed with a metal frame and marble laminate finish, this table adds an elegant touch to any executive or lounge space.

• #401016



Round Coffee Table

With a light oak laminate finish and metal frame for stability, this table has a generous surface and room to store items underneath.

• #400669



Round Side Table

This table has a 23"-wide surface and is a perfect spot to place a beverage or book when sitting.

• #400602



Large Nesting Table

Featuring a durable marble laminate finish and a black angular metal frame for a contemporary touch.

• #401021



Small Nesting Table

This table has a 20"-wide surface and taller legs to nest next to the Large Nesting Table.

• #401409



Contact your account representative
or call (800) 207-2587 for free, fast delivery.*

*Free delivery in the contiguous US.
Pricing and availability subject to change.
Patent and trademark information: vari.com/patents.
©2022-2024 Varidesk, LLC All rights reserved. v 06.24

SEPARATION, SIMPLIFIED



QUICKFLEX WALLS®

Ready, Set, Room

Create the office spaces you want without the time and expense of traditional walls. QuickFlex Walls by Vari® are modular and customizable so you can easily add them to your design without construction.



QuickFlex Walls® Panels and Doors

QuickFlex Walls feature a patented quick-locking system for installations that take minutes, not days, and are available in two frame finishes and a variety of surface materials to suit every need.

SPLIT PANELS

Slate Frame

- Glass (top)/Glass (lower)
- Glass (top)/Frosted (lower)
- Frosted (top)/Frosted (lower)
- Marker Board (top)/Frosted (lower)
- Felt (top)/Felt (lower)

Silver Frame

- Glass (top)/Glass (lower)
- Glass (top)/Frosted (lower)
- Frosted (top)/Frosted (lower)
- Marker Board (top)/Frosted (lower)
- Felt (top)/Felt (lower)

FULL PANELS

Slate Frame

- Glass
- Marker Board
- Felt

Silver Frame

- Glass
- Marker Board
- Felt

DOOR KITS

Slate Frame

- Glass (top)/Glass (lower)
- Frosted (top)/Frosted (lower)

Silver Frame

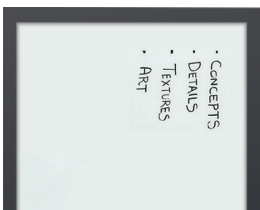
- Glass (top)/Glass (lower)
- Frosted (top)/Frosted (lower)

QUICKFLEX WALLS® 68 PANELS

Slate Frame

- Glass
- Frosted
- Marker Board
- Felt

Marker Board



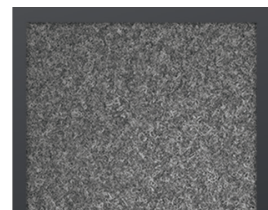
Frosted



Glass



Felt





Stability Brace

The Stability Brace attaches to the bottom of QuickFlex Walls® for additional stability.



Stability Rail

The Stability Rail attaches to the top of QuickFlex Walls® for additional stability.



Anchor Base Plate

The Anchor Base Plate provides additional stability in compliance with seismic code requirements.



QuickFlex Wall® Power

Power stretchers distribute 120-volt electricity through the walls to power workstations and rooms.



Contact your account representative
or call (800) 207-2587 for free, fast delivery.*

*Free delivery in the contiguous US.
Pricing and availability subject to change.
Patent and trademark information: vari.com/patents.
©2022-2024 Varidesk, LLC All rights reserved. v 06.24

QUICKFLEX CUBES™

Too Cool To Be Cubicles

These light, interlocking panels and connectors allow you to quickly add workstation privacy, collaboration hubs, focus pods, and more without the hassle or expense of old-fashioned cubicles.





QuickFlex Cubes™ Flat Panels 24 and 30

Mix and match panels and connections to make unique spaces. Each panel has a high-density foam core to absorb sounds easily connects with no screws or special tools.

- 24" Mist Grey: 402120
- 30" Mist Grey: 402419



QuickFlex Cubes™ L Connection

Joins two panels together at a softly-curving right angle. Easily connects with no screws or special tools.

- Mist Grey: #402121



QuickFlex Cubes™ T Connection

Joins three panels together with softly-curving right angles. Easily connects with no screws or special tools.

- Mist Grey: #402122



QuickFlex Cubes™ X Connection

Joins four panels together with softly-curving right angles. Easily connects with no screws or special tools.

- Mist Grey: #402123



QuickFlex Cubes™ Pen Holder

Use the pen holder to save desktop space and keep your tools of the trade more accessible.

• Black: #402421



QuickFlex Cubes™ Marker Board

Write notes and memos on a hanging marker board with easy erasure.

• Black: #402424



QuickFlex Cubes™ Hanging Shelf

Save desk space for books, notebooks, and other items on the hanging shelf.

• Black: #402425



QuickFlex Cubes™ Top Shelf

Display cherished items and work essentials on the top shelf.

• Black: #402423



QuickFlex Cubes™ Hook

Create additional storage space for bags, headphones, and other accessories with hooks.

Set of 2
• Black: #402422



QuickFlex Cubes™ Name Plate

Distinguish workstations with name plates that display customizable paper inserts.

Set of 4
• Black: #402503



QuickFlex Cubes™ Power

Plug-and-play power can be added to supply workstations and data cables can be routed as needed.



QuickFlex Cubes™ Stabilizing Foot

Enhance the stability of QuickFlex Cubes™ panels in straight runs with this low-profile foot.

- Black: #402433



Contact your account representative
or call (800) 207-2587 for free, fast delivery.*

*Free delivery in the contiguous US.
Pricing and availability subject to change.
Patent and trademark information: vari.com/patents.
©2022-2024 Varidesk, LLC All rights reserved. v 06.24

PANELS AND PARTITIONS

Personal Privacy

These easy-to-attach panels are a simple way to add a little privacy, separation, or sound dampening to open office layouts.



Acrylic Modesty Panel

Available in 48", 60", or 72"

Creates a partial barrier above or below Vari® Electric Standing Desks or Tables.

- 48": #42669
- 60": #42002
- 72": #401536



Acrylic Privacy Panel

Available in 48" or 60"

Creates a partial barrier around Vari® Electric Standing Desks or Tables.

- 48": #45249
- 60": #43734



Acrylic Privacy Panel

Available in 24" or 30"

Creates a partial barrier around Vari® Electric Standing Desks or Tables.

- 24": #400761
- 30": #400762

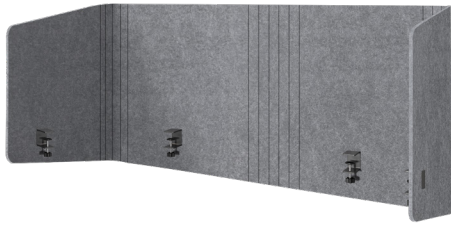


Acrylic Accessory Panel

Available in 60"

Includes marker board, cork board, pen holder, and shelf, adding privacy and organization to Vari Table 60x30 and Table 60x24.

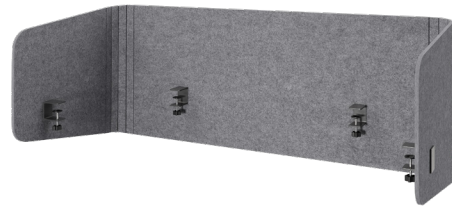
- #45695



Tall Privacy Desk Surround

Attaches to desk to provide privacy in an open office or shared space. 31½" x 60½"

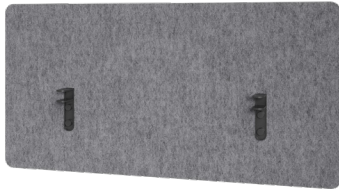
- Light Grey Felt: #402426



Privacy Desk Surround

Attaches to desk to provide privacy in an open office or shared space. 23¾" x 60½"

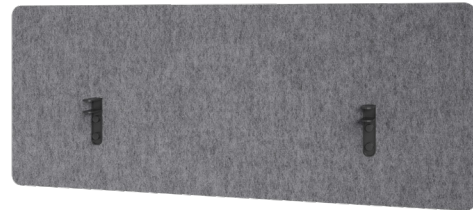
- Light Grey Felt: #402132



Felt Privacy + Modesty Panel 48

Easily attaches to our 48" desks or tables with no tools required.

- Set of 4
- Light Grey Felt: #400759



Felt Privacy + Modesty Panel 60

Easily attaches to our 60" desks or tables with no tools required.

- Set of 4
- Light Grey Felt: #400760



VariFocus™ Canopy

Minimize distractions and maximize focus with this easy to install canopy compatible with 60"-wide Vari Electric Standing Desks.

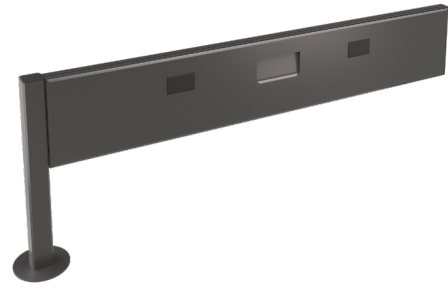
- Two-Tone Grey: #402367



Beams

Available in three lengths in our slate finish, Beams provide grounded power and cable management between desks.

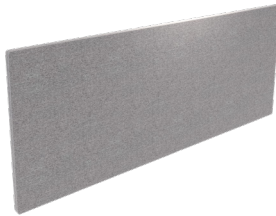
- 48": #400005
- 60": #400007
- 72": #400009



Beam Extensions

Available in three lengths in our slate finish, Beam Extensions connect to Beams, extending power and cable management to additional workspaces.

- 48": #400006
- 60": #400008
- 72": #400010



Beam Privacy Panel

Available in three lengths, these panels install on top of Beams to provide privacy and visually separate workspaces.

- 48" Sterling Grey (Polyester): #401939
- 60" Sterling Grey (Polyester): #401940
- 72" Sterling Grey (Polyester): #401941



Privacy Screen

Freestanding room divider to create privacy and help reduce office noise. Panels can stand separately or be zipped together.

- Steel Grey (Polyester): #402139



Privacy Booth

Soundproofed space for privacy with integrated power, lighting, and fans.

- White: #402183

STORAGE

Storage Solutions

Cabinets and drawers in a variety of sizes to help you keep your workspace clutter-free, your papers organized and within reach, and your supplies secure.



Lateral File Cabinet

Fully assembled cabinet including 2 soft-close, lockable drawers and space for letter- or legal-sized hanging files.

- Slate: #401555



File Cabinet

Fully assembled cabinet including 3 soft-close, lockable drawers, lockable casters, and space for letter- or legal-sized hanging files.

- Slate: #400742
- White: #400719



Storage Seat

Fully assembled storage option with locking casters, 2 soft-close drawers, removable cushion, and space for letter- or legal-sized hanging files.

- Slate: #400743



Slim File Cabinet

Fully assembled cabinet including 3 soft-close, lockable drawers, lockable casters, and space for letter- or legal-sized hanging files.

- Slate: #400718



Mobile Cubby

Rolling, two-tier open storage to keep bags and books accessible.

• Slate: #402147



Hanging Desk Cubby

Fully assembled, slide-on storage with a writable glass surface on top for notes.

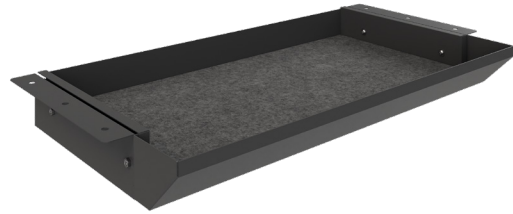
• Slate: #401461



Undermount Storage

Under-desk shelf and storage for a tidy workspace.

• Slate: #402169



Desk Drawer

Slim, under-desk drawer keeps the top of your desk clutter-free.

• Slate: #402168



Desk Shelf

Riser for your desk top provides better, more comfortable monitor viewing angle.

• Black: #402170



Contact your account representative
or call (800) 207-2587 for free, fast delivery.*

*Free delivery in the contiguous US.
Pricing and availability subject to change.
Patent and trademark information: vari.com/patents.
©2022-2024 Varidesk, LLC All rights reserved. v 06.24

POWER & LIGHTING

Powerful Ideas

Convenient power and lighting options for keeping your workspace running smoothly and your devices charged.



Power Strip

Includes 7 outlets, surge protection, and available in 8, 15, or 25ft lengths.

- 8ft Black: #42007
- 15ft Black: #43148
- 25ft Black: #400645



Power Hub

5 AC outlets, 1 USB-C port, and 1 USB-A port (2.7 amp) that easily clamps to desk.

- Black: #401797



Charging Station

Freestanding charging solution with 3 AC outlets, 1 USB-A port, and 1 USB-C port.

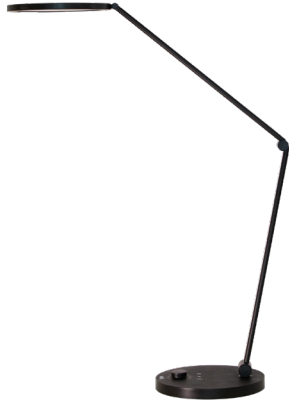
- Slate: #402154



Cable Management Tray

For easy cable management, organization, and storage, as well as easy access to power strips.

- Black: #400866
- White: 400867



Studio Lamp

Sleek, modern LED lamp with flexible positioning and adjustable brightness and color settings. Ideal for lighting video calls.

• Black: #402011



Contact your account representative
or call (800) 207-2587 for free, fast delivery.*

*Free delivery in the contiguous US.
Pricing and availability subject to change.
Patent and trademark information: vari.com/patents.
©2022-2024 Varidesk, LLC All rights reserved. v 06.24

MARKER BOARDS

Just Write

Whether on wheels or on the wall, an erasable glass marker board makes any place a great collaboration space.

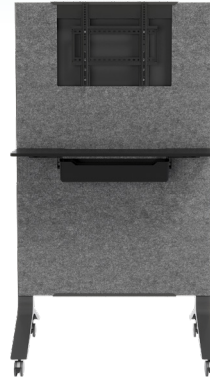


Mobile Glass Board

40x72

Dual-sided glass dry erase board that includes magnets, accessory holder, and lockable casters for easy movement.

• Slate: #42461



Mobile Media Station

Dual-sided media station with marker board and a mount for up to a 65" TV.

• Slate: #402331



Glass Board

72x48

A magnetic, erasable surface, making it perfect for collaboration and presentations.

• #400351



Contact your account representative
or call (800) 207-2587 for free, fast delivery.*

*Free delivery in the contiguous US.
Pricing and availability subject to change.
Patent and trademark information: vari.com/patents.
©2022-2024 Varidesk, LLC All rights reserved. v 06.24

MONITOR ARMS

Heads Up

Monitor Arms give your neck, back, and eyes an ergonomic assist, and help to free up more space on your desktop.



Triple-Monitor Arm

Fully articulating VESA compatible monitor arm lets you position your monitors wherever you need them.

- Black: #402035



Dual-Monitor Arm

Fully articulating VESA compatible monitor arm lets you position your monitors wherever you need them.

- Silver: #48003



Dual-Monitor Arm 180 Degree

VESA compatible monitor arms free up desk space and allow monitors to sit flush in tight spaces.

- Black: #41513



Monitor Arm + Laptop Stand

Position your monitor and laptop side-by-side to use both screens together.

- Silver: #48017



Single-Monitor Arm

Fully articulating VESA compatible monitor arm lets you position your monitor wherever you need it.

• Silver: #48002



Contact your account representative
or call (800) 207-2587 for free, fast delivery.*

*Free delivery in the contiguous US.
Pricing and availability subject to change.
Patent and trademark information: vari.com/patents.
©2022-2024 Varidesk, LLC All rights reserved. v 06.24

STANDING MATS

Must-Have Mats

Anti-fatigue mats make your workday more comfortable, and they're the perfect accessory for any sit-stand workstation.



Standing Mat

34x22

Cushions and supports your feet, knees, hips, and back.

• Black: #401925



Active Mat

27x20

Unique design allows for leg stretching and support while ensuring legs remain in motion and increasing blood circulation.

• Black: #401930



Contact your account representative
or call (800) 207-2587 for free, fast delivery.*

*Free delivery in the contiguous US.
Pricing and availability subject to change.
Patent and trademark information: vari.com/patents.
©2022-2024 Varidesk, LLC All rights reserved. v 06.24

DESKTOP CONVERTERS

Rise Up

Turn any desk into a standing desk and experience a happier, healthier workday with a VariDesk® desktop converter.



VariDesk® Pro Plus™ 30

Perfect for compact spaces, this 30"-wide standing desk converter features a weighted base for stability at any height and arrives fully assembled.

- Black: #43457



VariDesk® Pro Plus™ 36

This converter is our most popular seller, combining a 36"-wide display area that easily holds two monitors and a lower tray for your keyboard and mouse.

- Black: #42431
- White: #49857
- Espresso Wood: #402153
- Walnut: #402482



VariDesk® Pro Plus™ 48

Our widest desktop converter, the Pro Plus™ 48 provides maximum working space for multiple monitors, your laptop, and all your work accessories.

- Black: #49358



VariDesk® Tall 40

Designed for taller users, this desktop converter features a 23" high maximum height setting along with our best-in-class stability.

- Black: #45015



VariDesk® Cube Corner® 36

Add the ability to work sitting or standing to any corner cubicle or L-shaped desk with this uniquely designed desktop converter.

• Black: #49362



VariDesk® Cube Plus™ 40

Designed with a shallower base to fit standard cubicles, this desktop converter makes it easy to bring the benefits of standing to traditional offices.

• Black: #401821



VariDesk® Pro Plus™ 36 Electric

Go from sitting to standing with the touch of a button with this vertically-lifting electric desktop converter.

• Black: #401968



Contact your account representative
or call (800) 207-2587 for free, fast delivery.*

*Free delivery in the contiguous US.
Pricing and availability subject to change.
Patent and trademark information: vari.com/patents.
©2022-2024 Varidesk, LLC All rights reserved. v 06.24

Last Chance for these Vari Classics

STANDING MATS



Standing Mat 36x24

• Black: #400780



Standing Mat 34x20

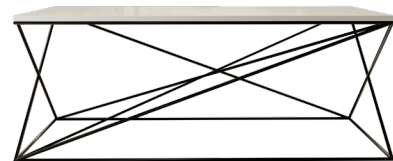
• Black: #47640

TABLES



Standing Meeting Table

• Butcher Block: #46188



Lounge Table

• #400603

CONVERTERS



Portable Laptop Stand

• Silver: #49942

OFFICE SEATING



Task Chair

• Grey: # 401537



Wood Conference Chair

Set of 2
• Dark Grey: #47258

LIGHTING & ACCESSORIES



LED Task Lamp + Wireless Charger

• Black: #42686



Table - Rotate Cable Tray

Gen 1
• Black: #400260
• White: #400263

SOFT SEATING



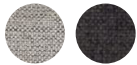
Large Ottoman

- Navy (Polyester): #400585
- **Light Grey (Polyester): #400586**
- Sand Grey (Faux Leather Vinyl): #401026
- Shadow Grey (Faux Leather Vinyl): #401028



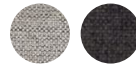
High Back Lounge Chair

- Shadow Grey: #401381



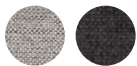
Corner Seat

- Silver Grey (Polyester): #401393
- Deep Grey (Polyester): #400616



Armless Seat

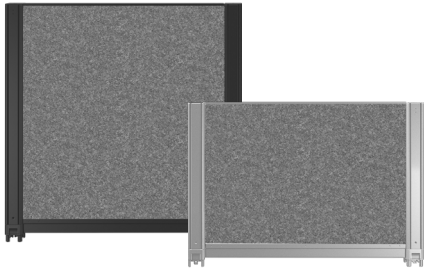
- Silver Grey (Polyester): # 401394
- Deep Grey (Polyester): #400614



Sectional Ottoman

- Silver Grey (Polyester): #401395
- Deep Grey (Polyester): #400618

QUICKFLEX WALLS®



QuickFlex Walls® Felt Extension Panels

Slate:

- 24x30 | 24x34 | 24x36
- 36x30 | 36x34 | 36x36

Silver

- 24x30 | 24x34 | 24x36
- 36x30 | 36x34 | 36x36



Contact your account representative
or call (800) 207-2587 for free, fast delivery.*

*Free delivery in the contiguous US.
Pricing and availability subject to change.
Patent and trademark information: vari.com/patents.
©2022-2024 Varidesk, LLC All rights reserved. v 06.24

ESSENTIAL COLLECTION

Made for Home

Designed for the home office, the affordable Essential Collection features a streamlined design and stylish finishes.



Essential Electric Standing Desk Split Top 48x24

The Essential Electric Standing Desk Split Top 48x24 features sturdy T-Style legs that provide stability and smoothly lift.

- Hazel Wood (white legs): #401512
- White (white legs): #402156
- Black (black legs): #402155



VariDesk® Essential Vertical Lift 30

The converter adjusts to any height between 4 ¾" – 19 ½" by moving in a straight-up-and-down direction, saving space.

- Black: #401720



VariDesk® Essential 30

An affordable 30"-wide standing-desk solution with a two-tier design with lower keyboard deck.

- Black: #401623



VariDesk® Essential 36

An affordable 36"-wide standing-desk solution with a two-tier design with lower keyboard deck.

- Black: #401624



Essential Task Chair

This affordable and comfortable chair makes it easy to adjust the seat height, seat cushion, arms, and lumbar support

- Black: #401529



Essential File Cabinet

Secure letter- and legal-sized files, phones, and more with all lockable drawers. Roll-and-lock casters provide easy mobility.

- White: #401527
- Black: #401528



Contact your account representative
or call (800) 207-2587 for free, fast delivery.*

*Free delivery in the contiguous US.
Pricing and availability subject to change.
Patent and trademark information: [vari.com/patents](https://www.vari.com/patents).
©2022-2024 Varidesk, LLC All rights reserved. v 06.24

ONLINE EXCLUSIVES

Fresh New Styles

Discover our exclusive online finishes, the latest result of our relentless innovation. These unique, high-quality options are designed to stand out and can't be found anywhere else.



VariDesk® Pro Plus™ 36

This converter is our most popular seller, combining a 36"-wide display area that easily holds two monitors and a lower tray for your keyboard and mouse.

- Light Wood: #402483
- Marble: #402484
- Walnut: #402482



Electric Standing Desk with ComfortEdge™ 60x30

The rounded, waterfall edge allows enhanced posture, a comfortable place to rest your forearms with less wrist stress, and a wider range of reach.

- Marble top/Slate legs: #402502
- Marble top/Silver legs: #402531



Contact your account representative
or call (800) 207-2587 for free, fast delivery.*

*Free delivery in the contiguous US.
Pricing and availability subject to change.
Patent and trademark information: vari.com/patents.
©2022-2024 Varidesk, LLC All rights reserved. v 06.24